



Windows Audio Drivers Guide

Version 7.2



Copyright

© 2006 Digidesign, a division of Avid Technology, Inc. All rights reserved. This guide may not be duplicated in whole or in part without the express written consent of Digidesign.

Avid, Digidesign, Pro Tools, and Pro Tools|HD are either trademarks or registered trademarks of Avid Technology, Inc. in the US and other countries. All other trademarks contained herein are the property of their respective owners.


Product features, specifications, system requirements, and availability are subject to change without notice.

PN 9329-55485-00 REV A 8/06


chapter 1

Introduction

The Digidesign® ASIO Driver and WaveDriver let you use your Pro Tools|HD audio interfaces with third-party applications that support the ASIO Driver or WaveDriver MME (Multimedia Extensions) standard.

 *For specifications and configuration information specific to each driver, see Chapter 2, “Digidesign ASIO Driver” and Chapter 3, “WaveDriver Windows System Audio Driver.”*

The Digidesign ASIO Driver and WaveDriver are automatically installed when you install Pro Tools.

 *For complete instructions on installing Pro Tools, see the Getting Started Guide for your Pro Tools system.*

System Requirements

This version of the Digidesign ASIO Driver and WaveDriver can be used on Digidesign-qualified Pro Tools systems running on a Digidesign-qualified version of Windows XP.

For complete system requirements, visit the Digidesign Web site (www.digidesign.com).

Compatibility Information

Digidesign can only assure compatibility and provide support for hardware and software it has tested and approved.

For a list of Digidesign hardware systems, Digidesign-qualified computers, operating systems, and devices, and Digidesign-qualified third-party ASIO-compatible or WaveDriver-compatible programs, refer to the Digidesign Web site (www.digidesign.com).

Digidesign ASIO Driver

Digidesign ASIO Driver Capabilities

The Digidesign ASIO Driver is a single-client, multichannel sound driver that allows third-party audio programs that support the ASIO Driver standard to record and play back through Pro Tools|HD® audio interfaces.

Full-duplex playback of 24- and 16-bit audio are supported at sample rates up to 48 kHz, depending on your Digidesign hardware and ASIO client application.

The Digidesign ASIO Driver provides up to 8 channels of input and output with Pro Tools|HD systems.



Check the Digidesign Web site (www.digidesign.com) for the latest third-party drivers for Pro Tools hardware, as well as current known issues.

Limitations of the Digidesign ASIO Driver

◆ The ASIO Driver cannot be used with multiple applications at the same time. Only one application at a time can use the ASIO Driver. Be sure to disable the Windows system sounds. It is also recommended that you use a separate sound card for games or other general work.

ASIO Driver Control Panel

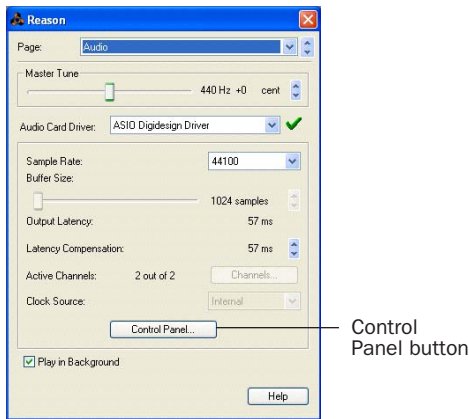
Configuring ASIO Driver settings can be done using the Digidesign ASIO Control Panel, which is accessed within some third-party ASIO-compatible client applications.

Accessing the Digidesign ASIO Driver Control Panel

To access the Digidesign ASIO Driver Control Panel from a third-party application:

- Refer to your program's documentation.

For example, with Propellerhead Reason, click the Control Panel button.



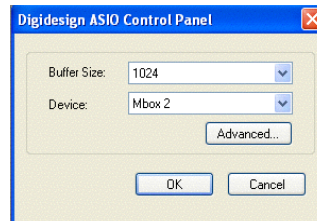
Setup Example, using Propellerhead Reason

The Digidesign ASIO Driver Control Panel cannot be accessed under the following circumstances:

- When Pro Tools is running.
- When playing or recording in an audio program that does not support the ASIO Driver.
- When using a third-party audio program that has an option to keep the ASIO Driver open even when you are not playing or recording. (You must close the audio program before you can open the ASIO Driver Control Panel.)

Using the ASIO Driver Control Panel

From the ASIO Driver Control Panel, you can change the Buffer Size setting or access the Hardware Setup dialog for your Digidesign hardware.



Digidesign ASIO Control Panel

Buffer Size

You may select from the following buffer sizes (depending on your Digidesign hardware):

- 128 samples
 - 256 samples
 - 512 samples
 - 1024 samples
 - 2048 samples
- ◆ Small buffers have the advantage of low latency in the record monitor path. (Latency is the time delay between a signal entering the audio inputs and leaving the outputs during recording.)
- ◆ Larger buffers have the advantage of making the Digidesign ASIO Driver more immune to audio dropouts during playback and recording.

In some ASIO-compatible audio programs, performing various tasks will interrupt the ASIO Driver and may result in clicks and pops in audio playback or recording. Choosing medium or large buffers (such as 256, 512, or 1024) can help alleviate this problem.

Changing the Buffer Size for the Digidesign ASIO Driver does not affect the H/W Buffer Size settings in the Pro Tools Playback Engine dialog.

Device

The Device Type will always be set to your installed Pro Tools hardware.

Advanced Button

The Advanced button opens the Hardware Setup dialog for the Digidesign hardware that you are using.



For more information on the Hardware Setup dialog, refer to your Getting Started Guide or the Pro Tools Reference Guide.

WaveDriver Windows System Audio Driver

WaveDriver Capabilities

The Digidesign WaveDriver Windows System Audio Driver is a single-client, multichannel sound driver that allows third-party audio programs that support the WaveDriver MME (Multimedia Extensions) standard to play back through Pro Tools|HD audio interfaces.

Playback of 24- and 16-bit audio are supported at sample rates up to 48 kHz, depending on your Digidesign hardware and WaveDriver client application.

The Digidesign WaveDriver provides 2 channels of output on all systems.

WaveDriver Limitations

WaveDriver is not multi-client. Only one application at a time can use the WaveDriver. It is also recommended that you use a separate sound card for games or other general work. For third-party software synthesizers and samplers, or for any applications requiring full duplex input and output use the Digidesign ASIO Driver (refer to Chapter 2, “Digidesign ASIO Driver”).



Check the Digidesign Web site (www.digidesign.com) for the latest third-party drivers for Pro Tools hardware, as well as current known issues.

Configuring WaveDriver for QuickTime Player


(Required for Using iTunes)

In order to let iTunes for Windows play back through Digidesign hardware, you must select the waveOut option in the QuickTime Player Audio settings.

To configure WaveDriver as the iTunes default device:

- 1 Close all WaveDriver third-party applications (including iTunes).
- 2 Choose Start > Programs > QuickTime > QuickTime Player.
- 3 In QuickTime Player, choose Edit > Preferences > QuickTime Preferences.
- 4 In the QuickTime Settings window, click the Audio Tab.
- 5 Select the “Safe mode (waveOut only)” option, and click Apply.
- 6 Click OK to close the QuickTime Settings window.
- 7 Exit QuickTime Player.

8 Re-launch iTunes.

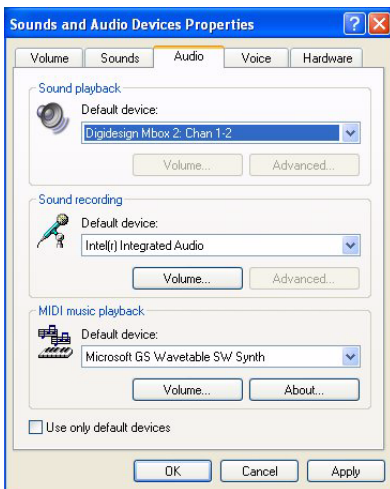
 You may also need to add iTunes to the WaveDriver Application Access list. See “Adding Third Party Applications to the Application Access List” on page 8.

Configuring WaveDriver for Windows Media Player and Other Third-Party WaveDriver Programs

WaveDriver is configured in the Sounds and Audio Devices Control Panel (for programs that use the Windows Sound Playback Default Device, such as Windows Media Player), or as a preference in third-party WaveDriver client applications.

To configure WaveDriver as the Windows Sound Playback Default Device:

- 1 Choose Start > Control Panel.
- 2 Double-click Sounds and Audio Devices.




Sounds and Audio Devices Control Panel

- 3 Click the Audio tab.

4 Select the Digidesign hardware in the Sound Playback default device lists.

5 Close the Control Panel.

When you run Windows Media Player, it automatically outputs to your Digidesign hardware.

 You may also need to add your third party WaveDriver application to the WaveDriver Application Access list. See “Adding Third Party Applications to the Application Access List” on page 8.


To configure WaveDriver for a third party WaveDriver application:

- In the third-party application, select the Digidesign hardware as the preference for your playback hardware. For details on setting this preference, refer to your program’s documentation.

Adding Third Party Applications to the Application Access List

The Digidesign WaveDriver uses an Application Access list to control third party application access to the Digidesign hardware. Some third party audio applications may not work with the WaveDriver unless they are included in this list.

For the latest instructions for adding and removing applications to the WaveDriver Application Access list, refer to the Digidesign Web site (<http://answerbase.digidesign.com/detail.cfm?DID=27424>).

 *Modifying the Digidesign WaveDriver Application Access list requires editing the Windows System Registry. Because editing the Windows Registry can result in problems if not done correctly, make sure to carefully follow the instructions for adding and removing applications.*



www.digidesign.com

DIGIDESIGN

2001 Junipero Serra Boulevard
Daly City, CA 94014-3886 USA
Tel: 650.731.6300
Fax: 650.731.6399

TECHNICAL SUPPORT (USA)

Tel: 650.731.6100
Fax: 650.731.6384

PRODUCT INFORMATION (USA)

Tel: 650.731.6102
Fax: 800.333.2137

INTERNATIONAL OFFICES

Visit our Digidesign Web site
for contact information