

# Windows Audio Drivers Guide

Version 7.1.2



**Copyright**

© 2006 Digidesign, a division of Avid Technology, Inc. All rights reserved. This guide may not be duplicated in whole or in part without the express written consent of Digidesign.

Avid, Digidesign, Mbox, Pro Tools, and Pro Tools LE are either trademarks or registered trademarks of Avid Technology, Inc. in the US and other countries. All other trademarks contained herein are the property of their respective owners.

Product features, specifications, system requirements, and availability are subject to change without notice.


PN 9329-55504-00 REV A 8/06

## chapter 1


# Introduction

The Digidesign® ASIO Driver and DirectSound Driver let you use your Digidesign Mbox® 2 Pro hardware interface with third-party applications that support the ASIO Driver or DirectSound Driver standard.

This chapter provides information on the Mbox 2 Pro Control Panel, which can be used to configure either driver.

 *For specifications and additional configuration information specific to each driver, see Chapter 2, “Digidesign ASIO Driver” and Chapter 3, “DirectSound Windows System Audio Driver.”*

The Digidesign ASIO Driver and DirectSound Driver for Mbox 2 Pro are automatically installed when you install Pro Tools.

 *For complete instructions on installing Pro Tools, see the Getting Started Guide for your Pro Tools system.*

---

## System Requirements

This version of the Digidesign ASIO Driver and DirectSound Driver can be used on Digidesign-qualified Pro Tools systems running on a Digidesign-qualified version of Windows XP.

For complete system requirements, visit the Digidesign Web site ([www.digidesign.com](http://www.digidesign.com)).


## Compatibility Information

Digidesign can only assure compatibility and provide support for hardware and software it has tested and approved.

For a list of Digidesign hardware systems, Digidesign-qualified computers, operating systems, and devices, and Digidesign-qualified third-party ASIO-compatible or DirectSound-compatible programs, refer to the Digidesign Web site ([www.digidesign.com](http://www.digidesign.com)).

## Mbox 2 Pro Driver Control Panel

Configuring ASIO Driver or DirectSound settings can be done using the Mbox 2 Control Panel, or within some third-party ASIO-compatible or DirectSound-compatible client applications.

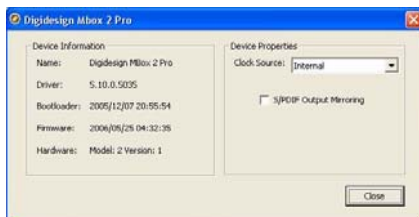
 For additional configuration information specific to each driver, see Chapter 2, “Digi-design ASIO Driver” and Chapter 3, “DirectSound Windows System Audio Driver.”

## Accessing the Mbox 2 Pro Control Panel

The Mbox 2 Pro Control Panel can be accessed without opening a third-party application (from the Windows Control Panel folder), or from within some third-party programs.

### To access the Mbox 2 Pro control panel without opening a third-party application:

- Choose Start > Control Panel > Digidesign Mbox 2 Pro.

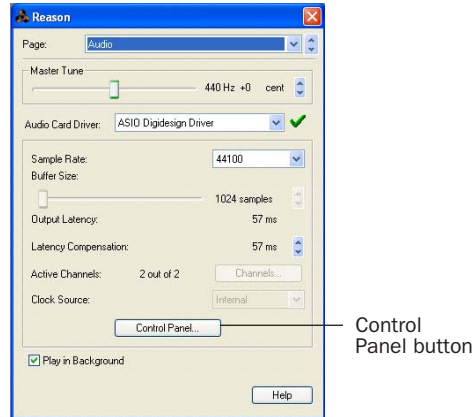


Digidesign Mbox 2 Pro Control Panel

### To access the Mbox 2 Pro from a third-party application:

- Refer to your program’s documentation.

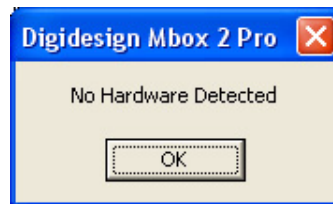
For example, with Propellerhead Reason, click the Control Panel button.



Setup Example, using Propellerhead Reason

## No Hardware Detected Dialog

If your hardware is not connected or cannot be detected, the No Hardware Detected dialog will open instead of the Mbox 2 Pro Control Panel.

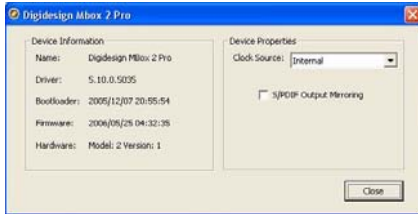


No Hardware Detected dialog

In this case, click OK, then check the FireWire (1394) connection between the computer and Mbox 2 Pro. If reconnecting the cable does not correct the problem, check that you have installed Pro Tools correctly.

## Using the Mbox 2 Pro Control Panel

Use the Mbox 2 Pro Control Panel to identify your Digidesign hardware, check firmware, view or change the Clock Source, and enable S/PDIF mirroring of analog outputs 1 and 2.



### Digidesign Mbox 2 Pro Control Panel

The ASIO Driver and DirectSound Driver use the same Mbox 2 Pro Control Panel.

**⚠** *Changing the Clock Source in the Mbox 2 Pro Control Panel will not dynamically update the setting in the Pro Tools Hardware Setup or Session Setup window if it is open. The Pro Tools Hardware Setup and Session Setup window will update when you close and reopen them.*

## Device Information Section

This area shows the hardware (Mbox 2 Pro) detected by the Control Panel, the firmware version of your Mbox 2 Pro, and other information.

## Device Properties Section

### Clock Source

This pop-up menu lets you choose the clock source for Mbox 2 Pro:

**Internal** Use this setting for normal playback of audio, or if you are recording audio through the analog inputs.

**S/PDIF** Use this setting if you are recording audio through the S/PDIF input.

**⚠** *S/PDIF input is only available when S/PDIF is the Clock Source.*

**Word Clock** Use this setting to clock Pro Tools to a Word clock source connected to the Mbox 2 Pro Word Clock In port.

### S/PDIF Output Mirroring

Check this box to set the S/PDIF output channels to always mirror analog outputs 1 and 2.




## chapter 2


# Digidesign ASIO Driver

The Digidesign ASIO Driver is a single-client, multichannel sound driver that allows third-party audio programs that support the ASIO Driver standard to record and play back through the Mbox 2 Pro audio interfaces.

Full-duplex playback and recording of 24- and 16-bit audio are supported at sample rates up to 96 kHz, depending on your ASIO client application.

The Digidesign ASIO Driver provides up to six channels of input and eight channels of output with Mbox 2 Pro systems.


 *The ASIO Driver is not multi-client. Only one application at a time can use the ASIO Driver. To use Mbox 2 Pro with other applications at the same time, use the Digidesign DirectSound Windows system audio driver for additional applications. See Chapter 3, “DirectSound Windows System Audio Driver.”*


 *Check the Digidesign Web site ([www.digidesign.com](http://www.digidesign.com)) for the latest third-party drivers for Pro Tools hardware, as well as current known issues.*

---

## Configuring ASIO Driver Settings

Configuring ASIO Driver settings can be done using the Mbox 2 Control Panel, or within most third-party ASIO-compatible client applications.

 *For information on the Mbox 2 Pro Control Panel, see “Mbox 2 Pro Driver Control Panel” on page 2.*

 *For more information on configuring your program, refer to its documentation.*



# DirectSound Windows System Audio Driver

The DirectSound Windows System Audio Driver is a multi-client, multichannel sound driver that allows third-party audio programs that support the DirectSound standard to play back and record through Mbox 2 Pro.

Playback and recording of 24- and 16-bit audio are supported at sample rates up to 96 kHz, depending on your DirectSound client application.

The DirectSound Driver provides up to six channels of input and eight channels of output with Mbox 2 Pro systems.



*Check the Digidesign Web site ([www.digidesign.com](http://www.digidesign.com)) for the latest third-party drivers for Pro Tools hardware, as well as current known issues.*

---

## Configuring DirectSound Driver Settings

Configuring DirectSound settings can be done using the Mbox 2 Pro Control Panel, or within most third-party DirectSound-compatible client applications.



*For information on the Mbox 2 Pro Control Panel, see “Mbox 2 Pro Driver Control Panel” on page 2.*

Some third-party applications require additional configuration step (such as iTunes). See “Configuring DirectSound Driver for QuickTime Player (Required for Using iTunes)” on page 7 and “Configuring DirectSound Driver for Windows Media Player and Other Third-Party DirectSound Driver Programs” on page 8.



*For more information on configuring your program, refer to its documentation.*

---

## Configuring DirectSound Driver for QuickTime Player (Required for Using iTunes)

In order to let iTunes for Windows play back through Digidesign hardware, you must select the waveOut option in the QuickTime Player Audio settings.

**To configure DirectSound Driver as the iTunes default device:**

- 1 Close all DirectSound Driver third-party applications (including iTunes).
- 2 Choose Start > Programs > QuickTime > QuickTime Player.
- 3 In QuickTime Player, choose Edit > Preferences > QuickTime Preferences.
- 4 In the QuickTime Preferences window, click the Audio Tab.

- 5 Select the “Safe mode (waveOut only)” option, and click Apply.
- 6 Click OK to close the QuickTime Settings window.
- 7 Exit QuickTime Player.
- 8 Re-launch iTunes.

---

## Configuring DirectSound Driver for Windows Media Player and Other Third-Party DirectSound Driver Programs

The DirectSound Driver is configured in the Sounds and Audio Devices Control Panel (for programs that use the Windows Sound Playback Default Device, such as Windows Media Player), or as a preference in third-party DirectSound Driver client applications.

### To configure DirectSound Driver as the Windows Sound Playback Default Device:

- 1 Choose Start > Control Panel.

- 2 Double-click Sounds and Audio Devices.



*Sounds and Audio Devices Control Panel*

- 3 Click the Audio tab.
- 4 Select the Digidesign hardware in the Sound Playback default device lists.
- 5 Close the Control Panel.

When you run Windows Media Player, it automatically outputs to your Digidesign hardware.

### To configure DirectSound Driver for a third-party DirectSound Driver application:

- In the third-party application, select the Digidesign hardware as the preference for your playback hardware. For details on setting this preference, refer to your program’s documentation.



[www.digidesign.com](http://www.digidesign.com)

---

**DIGIDESIGN**

2001 Junipero Serra Boulevard  
Daly City, CA 94014-3886 USA  
Tel: 650.731.6300  
Fax: 650.731.6399

**TECHNICAL SUPPORT (USA)**

Tel: 650.731.6100  
Fax: 650.731.6384

**PRODUCT INFORMATION (USA)**

Tel: 650.731.6102  
Fax: 800.333.2137

**INTERNATIONAL OFFICES**

Visit our Digidesign Web site  
for contact information