



DigiTest™

Version 7.4



Legal Notices

This guide is copyrighted ©2007 by Digidesign, a division of Avid Technology, Inc. (hereafter "Digidesign"), with all rights reserved. Under copyright laws, this guide may not be duplicated in whole or in part without the written consent of Digidesign.

003, 003 Rack, 96 I/O, 96i I/O, 192 Digital I/O, 192 I/O, 888|24 I/O, 882|20 I/O, 1622 I/O, 24-Bit ADAT Bridge I/O, AudioSuite, Avid, Avid DNA, Avid Mojo, Avid Unity, Avid Unity ISIS, Avid Unity MediaNetwork, Avid Xpress, AVoption, AVoption|V10, Beat Detective, Bruno, Command|8, Control|24, D-Command, D-Control, D-Fi, D-fx, D-Show, DAE, Digi 002, Digi 002 Rack, DigiBase, DigiDelivery, Digidesign, Digidesign Audio Engine, Digidesign Intelligent Noise Reduction, Digidesign TDM Bus, DigiDrive, DigiRack, DigiTest, DigiTranslator, DINR, DV Toolkit, EditPack, Impact, Interplay, M-Audio, MachineControl, Maxim, Mbox, MediaComposer, MIDI I/O, MIX, MultiShell, OMF, OMF Interchange, PRE, ProControl, Pro Tools M-Powered, Pro Tools, Pro Tools|HD, Pro Tools LE, QuickPunch, Reel Tape, Reso, Reverb One, ReVibe, RTAS, Smack!, SoundReplacer, Sound Designer II, Strike, Structure, SYNC HD, SYNC I/O, Synchronic, TL Space, Velvet, and X-Form are trademarks or registered trademarks of Digidesign and/or Avid Technology, Inc. All other trademarks are the property of their respective owners.

Product features, specifications, system requirements, and availability are subject to change without notice.

PN 9329-57170-00 REV A 7/07

Comments or suggestions regarding our documentation?
email: techpubs@digidesign.com

DigiTest

Installing DigiTest

DigiTest is automatically installed with Pro Tools HD.

If you are using a computer without Pro Tools HD to update firmware on a Digidesign peripheral, you can install DigiTest using the DigiTest installer on the disc that came with the peripheral.

You can also download the latest version of DigiTest from the Digidesign website (www.digidesign.com).

After it is installed, DigiTest resides in the following folder on your hard drive: Digidesign/Pro Tools/Pro Tools Utilities.

⚠ *Before you run DigiTest, lower the volume of all output devices. Very loud digital noise may be emitted during the test.*

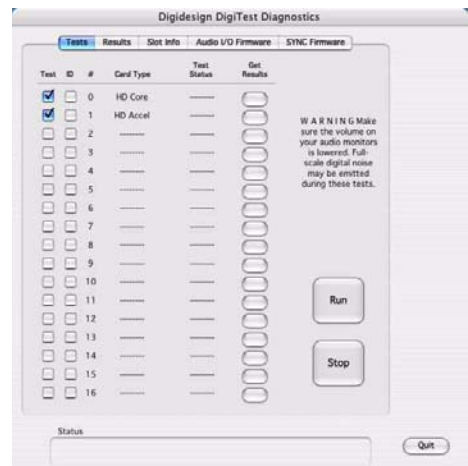
Launching DigiTest

To launch DigiTest:

- 1 Quit Pro Tools if it is running.
- 2 Lower the volume of all output devices on your system.
- 3 Locate and double-click the DigiTest icon.

DigiTest opens and lists the supported cards it finds in your system.

If you have a large number of cards or audio interfaces, it may take a while for the DigiTest window to appear, as DigiTest scans for all cards and interfaces connected to the system.



DigiTest Tests window

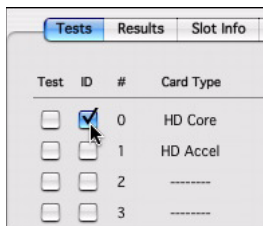
💡 *The order in which cards are listed within DigiTest may not match the actual slot locations of cards installed in your computer or expansion chassis. This is normal, and does not affect DigiTest operations in any way.*

Identifying Pro Tools|HD Cards

You can use DigiTest to identify which cards are in which slots in your system. This is especially useful if you have multiple Digidesign cards of the same type installed in your system.

To identify Digidesign cards:

- 1 Quit Pro Tools if it is running.
- 2 Launch DigiTest by double-clicking its icon.
- 3 Open your computer case or expansion chassis so you can see the top edge of the cards installed in your system.
- 4 In the DigiTest Tests window, select the ID check box next to a card name. The green LED near the top edge of the corresponding card flashes.



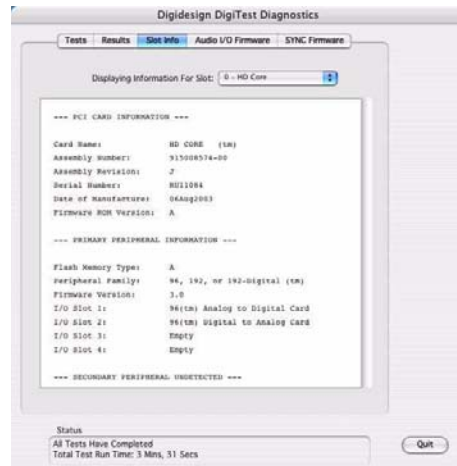
Selecting ID for a card in the DigiTest Tests window

Viewing Pro Tools|HD Card Information

DigiTest can display identifying information such as serial number, date of manufacture, and firmware ROM version for each card in your system. This information is useful if you need to contact Digidesign Technical Support about your Pro Tools hardware.

To display information for a card in your system:

- 1 Quit Pro Tools if it is running.
- 2 Launch DigiTest by double-clicking its icon.
- 3 Click Slot Info.



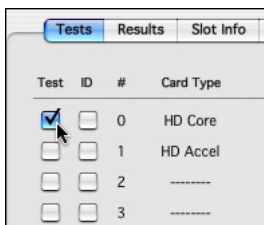
DigiTest Slot Info window

- 4 Choose a card slot from the pop-up menu.

Testing Pro Tools|HD Cards

To test Pro Tools|HD cards:

- 1 Quit Pro Tools if it is running.
- 2 Launch DigiTest by double-clicking its icon.
- 3 In the DigiTest Tests window, select the cards in your system you want to test by selecting Test in the left hand column for each card.




Selecting Test for a card in the DigiTest Tests window

- 4 Click Run.

If cards are not installed in the proper order, DigiTest will display error codes in the Status box of each card identified as being misconfigured.


The more cards and audio interfaces in your system, the longer the test will take.

 LEDs on your digital interfaces may light up during this test. This is normal.

Viewing Test Results

To view the test results:

- 1 Do one of the following:
 - Click the Get Results button next to a card name.
 - or –
 - Click Results and choose a card name from the pop-up menu.
- 2 In the Results page of the DigiTest window, do one of the following:
 - Click Show Failures Only to display failed tests for the selected card.
 - or –
 - Click Show All Results to display all test results for the selected card.

 For descriptions of error codes, refer to “DigiTest Error Codes” on page 4

- 3 Click Quit to close DigiTest.
- 4 Restart your computer.

Errors and Undetected Cards

Complete the steps below if any of the following occur:

- DigiTest fails to launch.
- An error message has been displayed for a card in DigiTest.
- A supported card is installed but not automatically detected during DigiTest.

If a supported card is installed and is not automatically detected:

- 1 Quit DigiTest.
- 2 Turn off the entire Pro Tools system.
- 3 Reinstall the Pro Tools|HD cards.

4 Check the card seating.

5 Check the TDM FlexCable connections. Check the orientation of the cable from card to card (ports B to A), and check the integrity of the FlexCable connections to the cards.

6 Turn on the system.

7 Run DigiTest again.

DigiTest Error Codes

DigiTest Error Codes

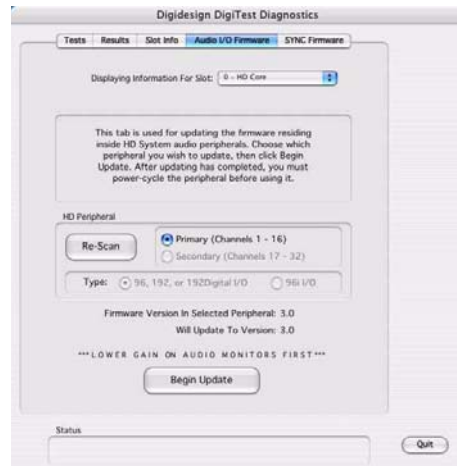
Code	Description
Err3	Cards from different Pro Tools systems are incorrectly mixed. See the configuration chapters.
Err4	Cards marked with this error are installed in the wrong order. See the configuration chapters.
Err5	Too many cards of this type are installed in the system. Visit the Digidesign website for compatibility information.
Err6	A card is installed in a reserve slot. For example, a Digidesign card is installed in the slot reserved for the Expansion Chassis Host Interface card. Refer to the configuration chapters, as well as related installation guides.
Err1220	SCSI Accelerator card is installed in the wrong slot. See the configuration chapters for correct location of the card.
Err1221	Expansion Chassis Host Interface card is installed in the wrong slot. See Expanded Systems Guide for correct location of the card.

Updating Audio Peripheral Firmware

If firmware updates are available for any of your Pro Tools|HD audio interfaces (192 I/O, 192 Digital I/O, 96 I/O, or 96i I/O), you can use DigiTest to perform the update. Within DigiTest, the Audio I/O Firmware page tells you the firmware version for the selected peripheral and lets you update to a newer version, if necessary.

To update the firmware in a Pro Tools|HD audio interface:

- 1 Quit Pro Tools if it is running.
- 2 Launch DigiTest by double-clicking its icon.
- 3 Click Audio I/O Firmware.



DigiTest Audio I/O Firmware window

4 Choose a card slot from the pop-up menu. If any Pro Tools|HD audio interfaces are connected to the card, the Primary or Secondary options will become available in the HD Peripheral section of the Firmware page.

If any connected interfaces are not recognized, check the connections and power to each interface and click Re-Scan.

5 Under HD Peripheral, select Primary or Secondary to view the firmware version for the corresponding interface. The firmware version is displayed just below the HD Peripheral section of the Firmware page.

6 If the firmware version is not current, click Begin Update to update the firmware in the selected audio interface.

The status of the firmware update process is displayed in the status area at the bottom of the Firmware page.

7 After the update process is complete, click Quit to close DigiTest.

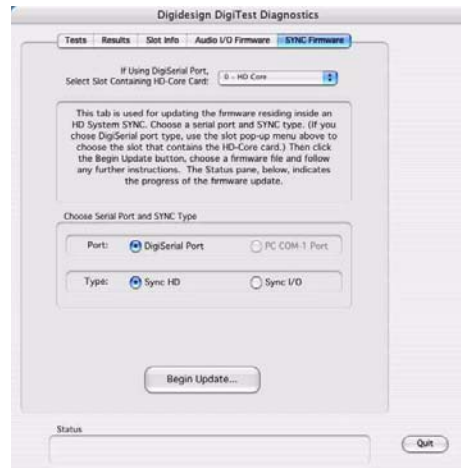
Updating SYNC Peripheral Firmware

You can update the firmware on a Digidesign SYNC peripheral from the DigiTest application.

To update the firmware in a Digidesign SYNC peripheral:

- 1 Quit Pro Tools if it is running.
- 2 Confirm that the SYNC peripheral is properly connected to your computer in one of the following ways:
 - If it is connected to a Pro Tools system, it should be connected to a DigiSerial Port on an HD Core card.
 - (Windows Only) If it is connected to a computer without Pro Tools, it should be connected to the COM 1 port on the computer with a standard serial cable.
- 3 Launch DigiTest by double-clicking its icon.

4 Click SYNC Firmware.



DigiTest SYNC Firmware window

5 If you are using a DigiSerial Port connection, make sure you have selected the HD Core card from the pop-up menu.

6 Select the type of port connection for the SYNC peripheral (DigiSerial Port or COM Port).

7 Select the type of SYNC peripheral you are updating (SYNC HD or SYNC I/O).

8 Click Begin Update.

9 Locate the firmware file that corresponds to the SYNC peripheral you are updating. The firmware file for SYNC I/O has a file extension of .SYC. The firmware file for SYNC HD has a file extension of .SYH.

10 Follow the on-screen instructions to power cycle the SYNC peripheral while holding the Set button.

11 Wait for the firmware update to complete. Do not power off the SYNC peripheral while the update is in progress.

12 When the update is complete, click Quit.



www.digidesign.com

DIGIDESIGN

2001 Junipero Serra Boulevard
Daly City, CA 94014-3886 USA
Tel: 650.731.6300
Fax: 650.731.6399

TECHNICAL SUPPORT (USA)

Tel: 650.731.6100
Fax: 650.731.6384

PRODUCT INFORMATION (USA)

Tel: 800.333.2137

INTERNATIONAL OFFICES

Visit the Digidesign website
for contact information